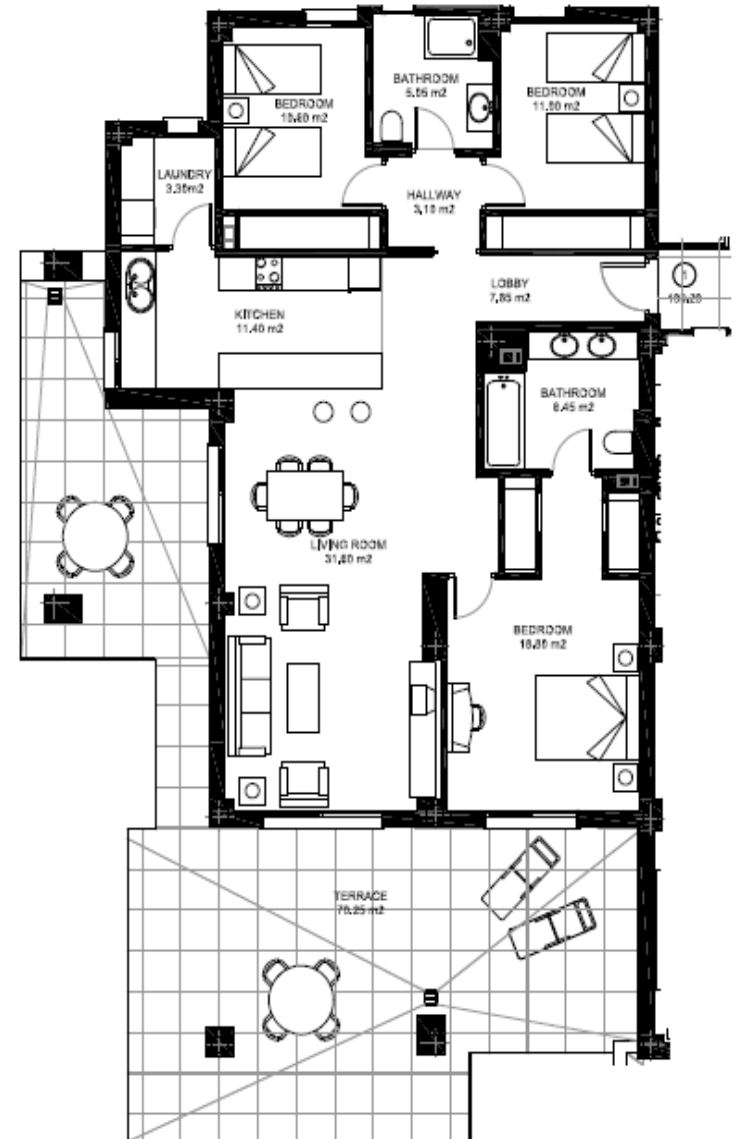


## SPECIFICATIONS

No.	D
Bedrooms	3
Bathrooms	2
En-Suite Bathrooms	1
Built	127m <sup>2</sup>
Terrace	78m <sup>2</sup>
Total Build	205m <sup>2</sup>
Parking No.	2
Parking m2	22m <sup>2</sup>
Storage Room No.	2
Storage Room m2	8m <sup>2</sup>
Price	€435.000

## FLOOR PLAN | GROUND FLOOR

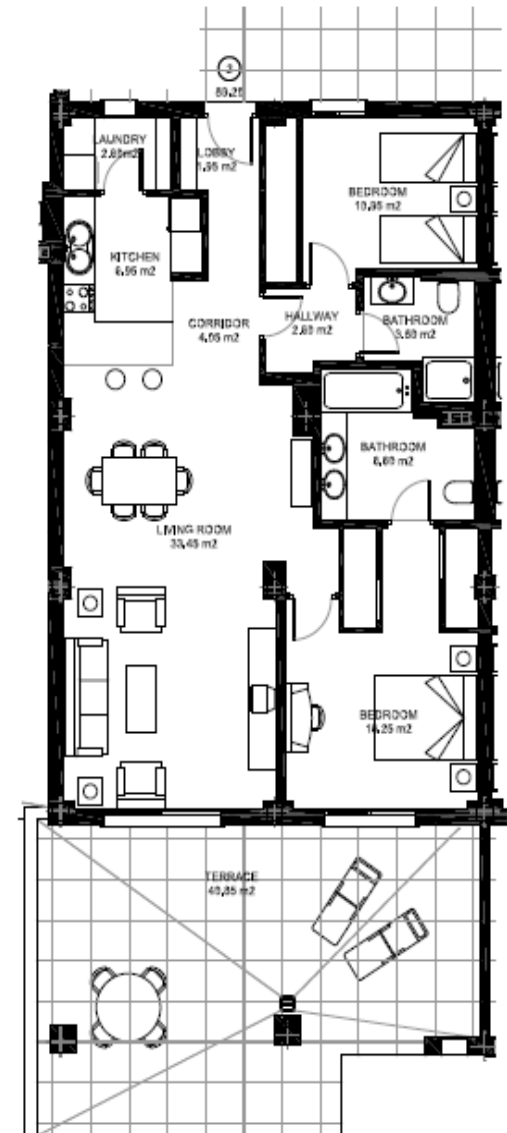


## SPECIFICATIONS

No.	C
Bedrooms	2
Bathrooms	2
En-Suite Bathrooms	1
Built	103m <sup>2</sup>
Terrace	53m <sup>2</sup>
Total Build	156m <sup>2</sup>
Parking No.	3
Parking m2	21m <sup>2</sup>
Storage Room No.	3
Storage Room m2	6m <sup>2</sup>
Price	€345.000



## FLOOR PLAN | GROUND FLOOR

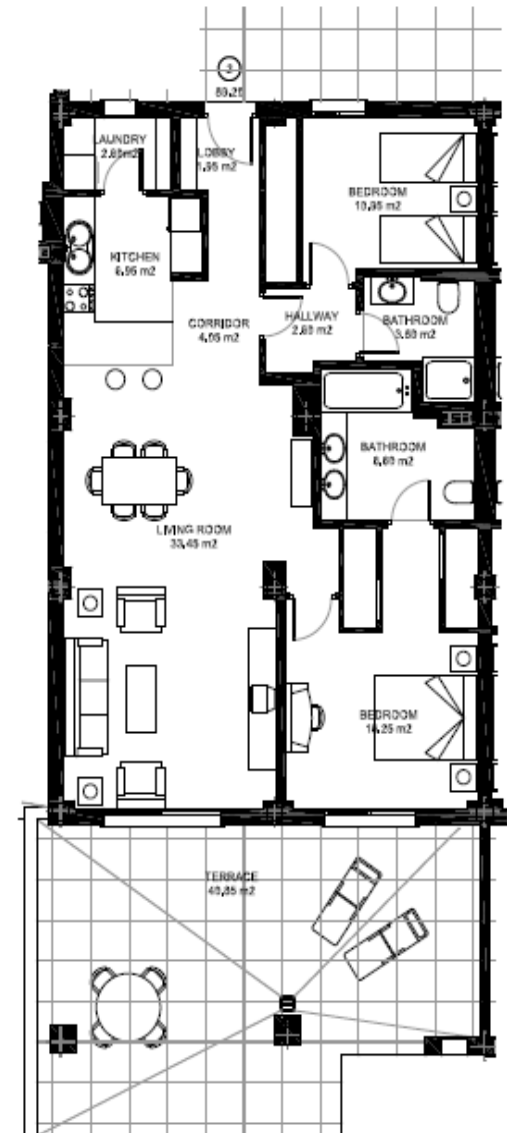


## SPECIFICATIONS

No.	B
Bedrooms	2
Bathrooms	2
En-Suite Bathrooms	1
Built	103m <sup>2</sup>
Terrace	53m <sup>2</sup>
Total Build	156m <sup>2</sup>
Parking No.	4
Parking m2	20m <sup>2</sup>
Storage Room No.	4
Storage Room m2	8m <sup>2</sup>
Price	€350.000



## FLOOR PLAN | GROUND FLOOR

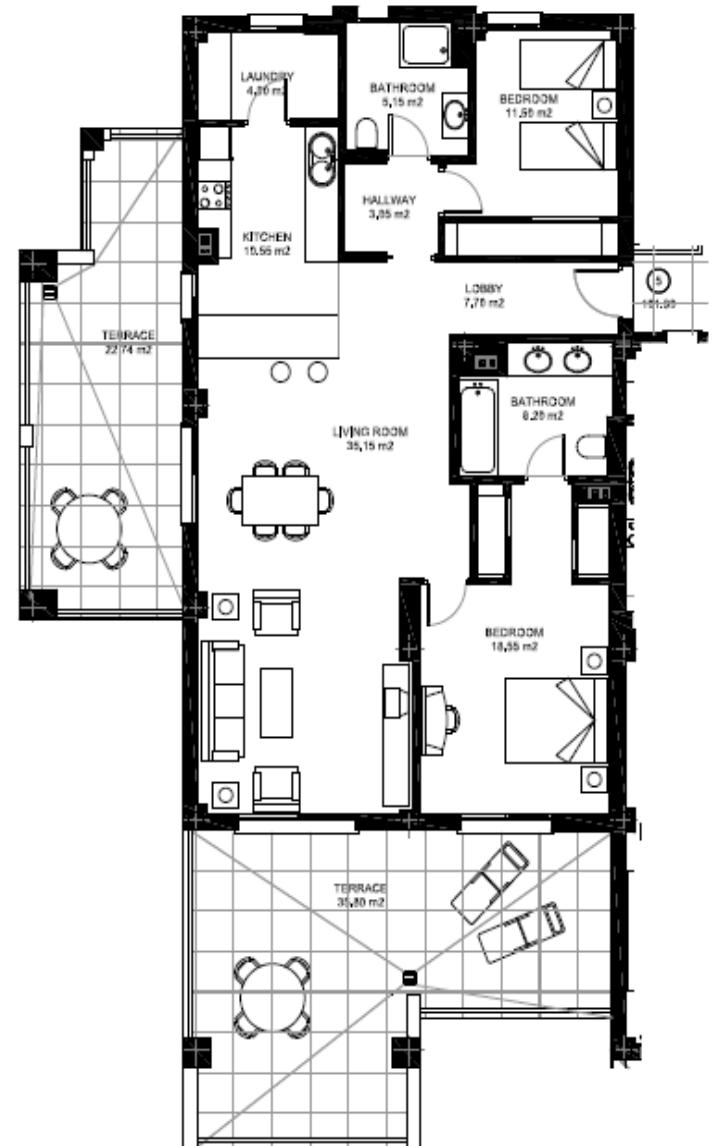


## SPECIFICATIONS

No.	D
Bedrooms	2
Bathrooms	2
En-Suite Bathrooms	1
Built	118m <sup>2</sup>
Terrace	58m <sup>2</sup>
Total Build	176m <sup>2</sup>
Parking No.	7
Parking m2	21m <sup>2</sup>
Storage Room No.	7
Storage Room m2	6m <sup>2</sup>
Price	€410.000



## FLOOR PLAN | FIRST FLOOR

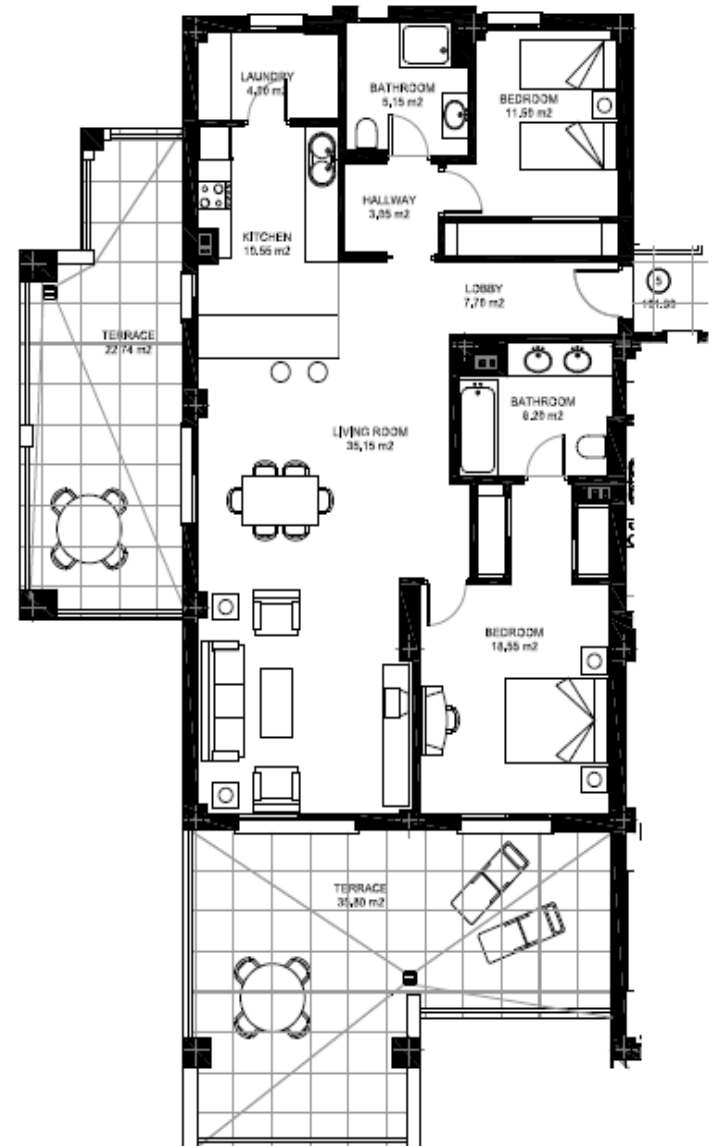


## SPECIFICATIONS

No.	C
Bedrooms	2
Bathrooms	2
En-Suite Bathrooms	1
Built	103m <sup>2</sup>
Terrace	44m <sup>2</sup>
Total Build	147m <sup>2</sup>
Parking No.	8
Parking m2	21m <sup>2</sup>
Storage Room No.	8
Storage Room m2	6m <sup>2</sup>
Price	€370.000



## FLOOR PLAN | FIRST FLOOR

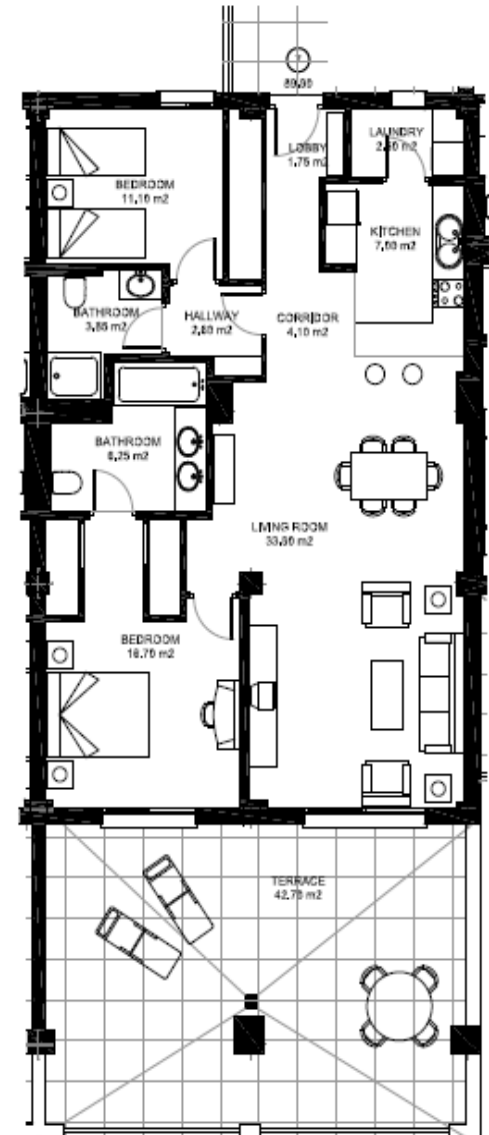


## SPECIFICATIONS

No.	B
Bedrooms	2
Bathrooms	2
En-Suite Bathrooms	1
Built	103m <sup>2</sup>
Terrace	44m <sup>2</sup>
Total Build	147m <sup>2</sup>
Parking No.	9
Parking m2	20m <sup>2</sup>
Storage Room No.	9
Storage Room m2	6m <sup>2</sup>
Price	€380.000



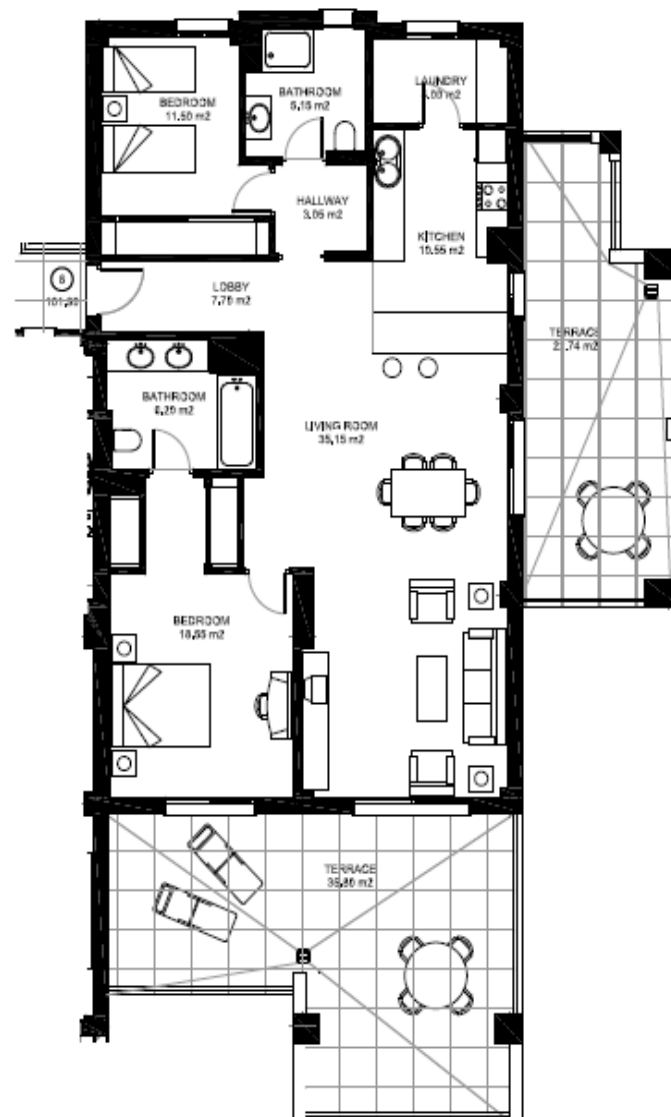
## FLOOR PLAN | FIRST FLOOR



## SPECIFICATIONS

No.	A
Bedrooms	2
Bathrooms	2
En-Suite Bathrooms	1
Built	118m <sup>2</sup>
Terrace	58m <sup>2</sup>
Total Build	176m <sup>2</sup>
Parking No.	10
Parking m2	20m <sup>2</sup>
Storage Room No.	10
Storage Room m2	6m <sup>2</sup>
Price	€435.000

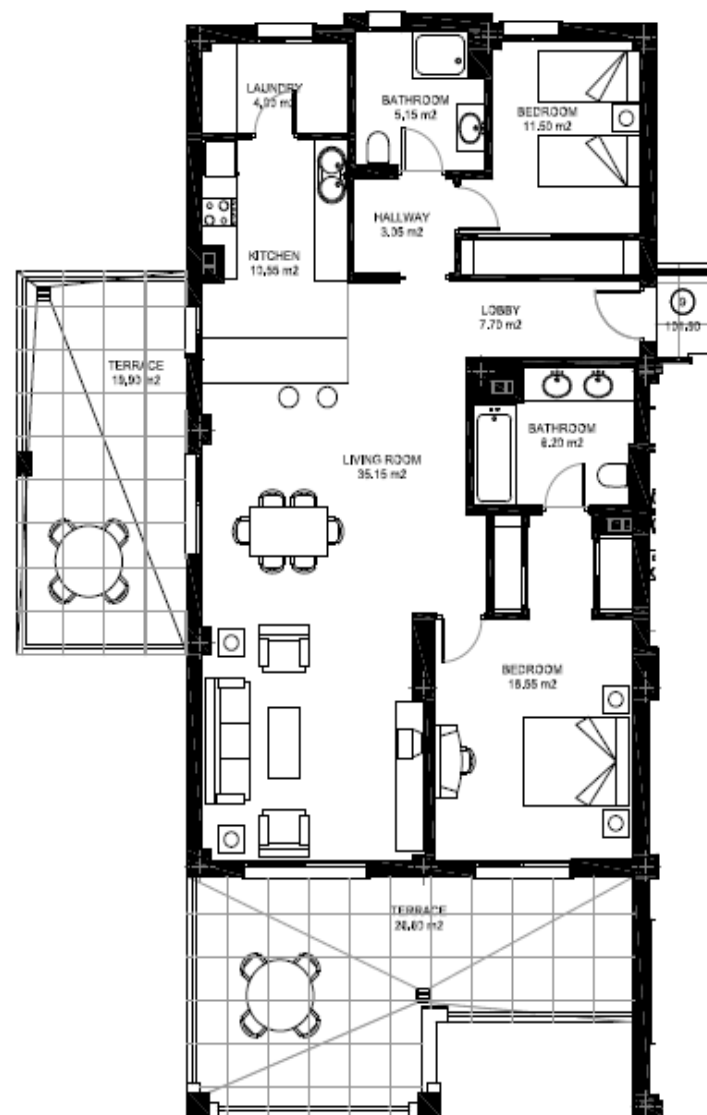
## FLOOR PLAN | FIRST FLOOR



## SPECIFICATIONS

No.	D
Bedrooms	2
Bathrooms	2
En-Suite Bathrooms	1
Built	118m <sup>2</sup>
Terrace	48m <sup>2</sup>
Total Build	166m <sup>2</sup>
Parking No.	1
Parking m2	27m <sup>2</sup>
Storage Room No.	1
Storage Room m2	8m <sup>2</sup>
Price	€445.000

## FLOOR PLAN | PENTHOUSE

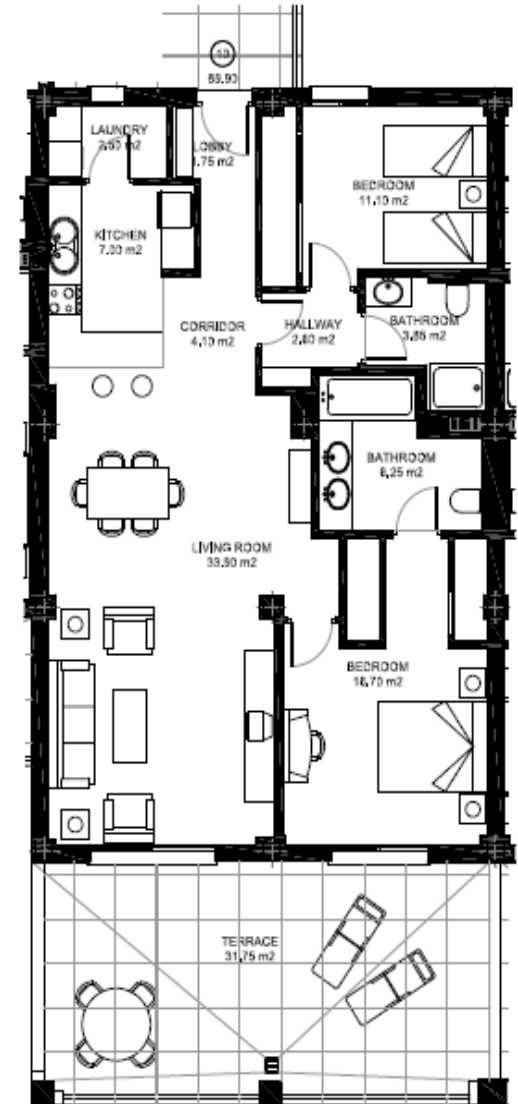


## SPECIFICATIONS

No.	C
Bedrooms	2
Bathrooms	2
En-Suite Bathrooms	1
Built	103m <sup>2</sup>
Terrace	32m <sup>2</sup>
Total Build	135m <sup>2</sup>
Parking No.	11
Parking m2	21m <sup>2</sup>
Storage Room No.	11
Storage Room m2	6m <sup>2</sup>
Price	€425.000



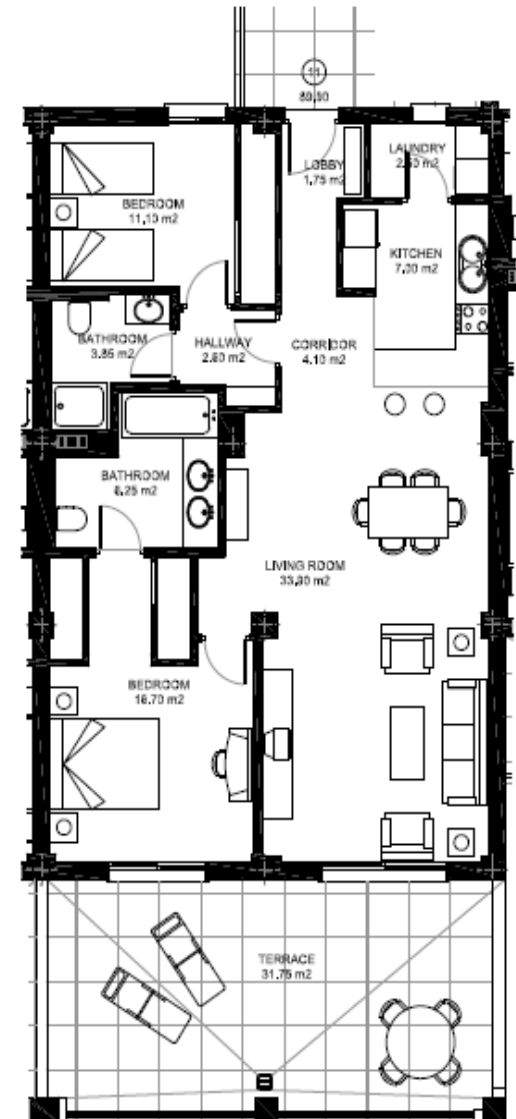
## FLOOR PLAN | PENTHOUSE



## SPECIFICATIONS

No.	B
Bedrooms	2
Bathrooms	2
En-Suite Bathrooms	1
Built	103m <sup>2</sup>
Terrace	32m <sup>2</sup>
Total Build	135m <sup>2</sup>
Parking No.	12
Parking m2	21m <sup>2</sup>
Storage Room No.	12
Storage Room m2	6m <sup>2</sup>
Price	€440.000

## FLOOR PLAN | PENTHOUSE



## SPECIFICATIONS

No.	A
Bedrooms	2
Bathrooms	2
En-Suite Bathrooms	1
Built	118m <sup>2</sup>
Terrace	48m <sup>2</sup>
Total Build	166m <sup>2</sup>
Parking No.	5
Parking m2	27m <sup>2</sup>
Storage Room No.	5
Storage Room m2	8m <sup>2</sup>
Price	€490.000

## FLOOR PLAN | PENTHOUSE

